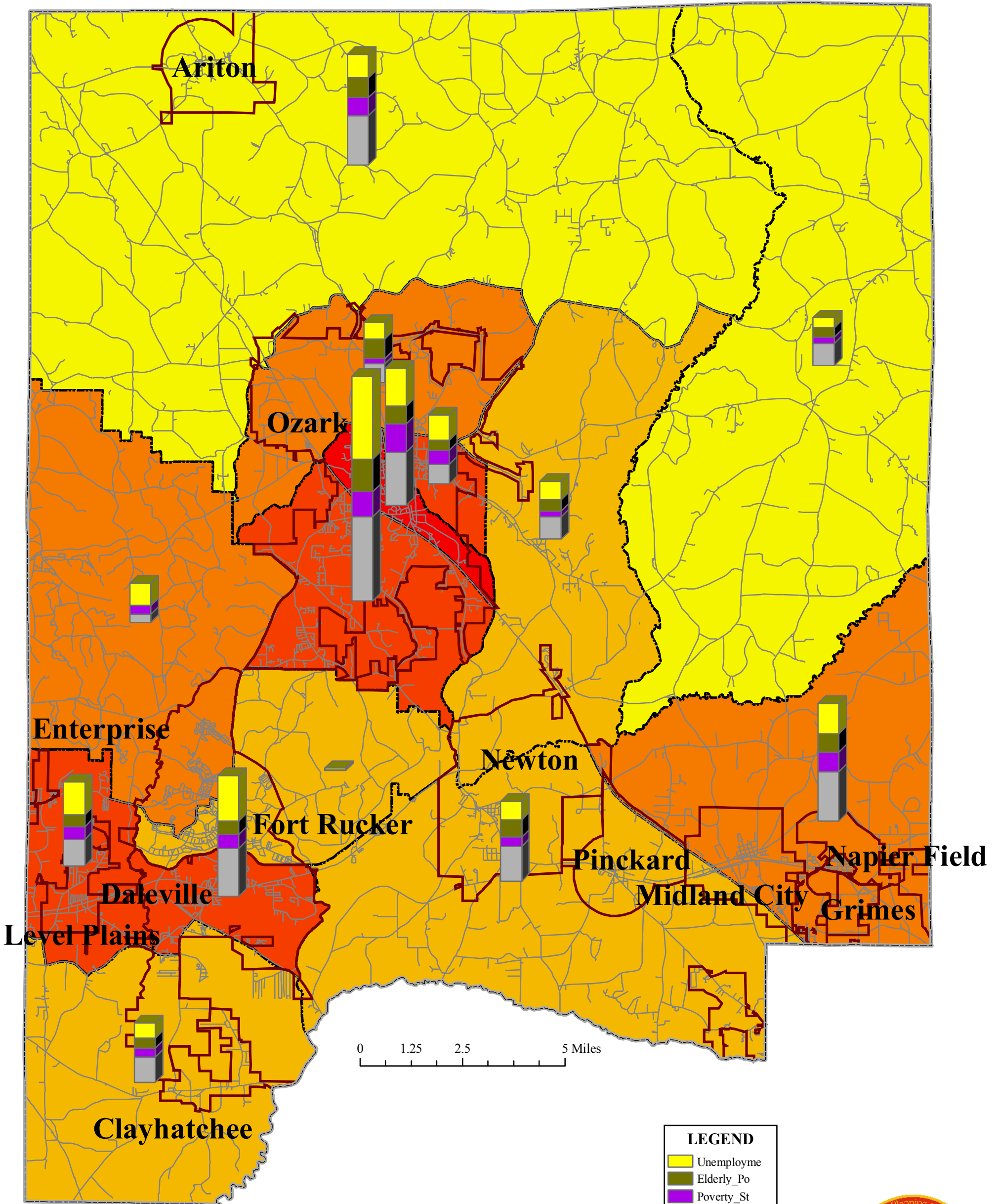


# Dale County Common Origins



**LEGEND**

- Unemployme
- Elderly\_Po
- Poverty\_St
- Disability

Population Density

- 22.37 - 27.34
- 27.35 - 65.96
- 65.97 - 112.19
- 112.20 - 492.87
- 492.88 - 786.35



Source: U.S. Census Bureau, 2000 SF3 Data

\*Demographics are displayed by Census Tract with Unemployed multiplied by 10 for scaling purposes

